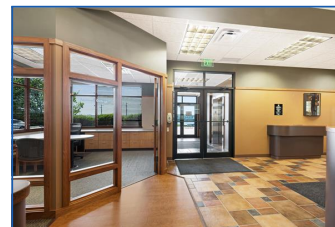
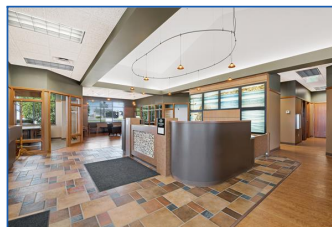




PRESENTING 949 Mississippi View Ct

6,836 sq ft, free standing, class A building with panoramic views of the mighty Mississippi! Excellent facility for corporate office or can be adapted for many different uses. Main level has 3,418 sq ft. Lower level has 1,757 sq ft of finished space.

- FOR LEASE
- FORMER CREDIT UNION
- 3 DRIVE UP LANES
- ATM MACHINE
- ELEVATOR
- PARTIALLY FURNISHED
- 32 PARKING SPACES
- HIGH VISIBILITY
- CALL CENTER
- MLS# QC4233372
- \$6,000/MONTH GROSS



**Ruhl
& Ruhl**
REALTORS

Jason Miller
Realtor
Ruhl & Ruhl REALTORS
Office: 309-314-2120
Email: jasonmiller@ruhlhomes.com
Cell: 309-314-2120

